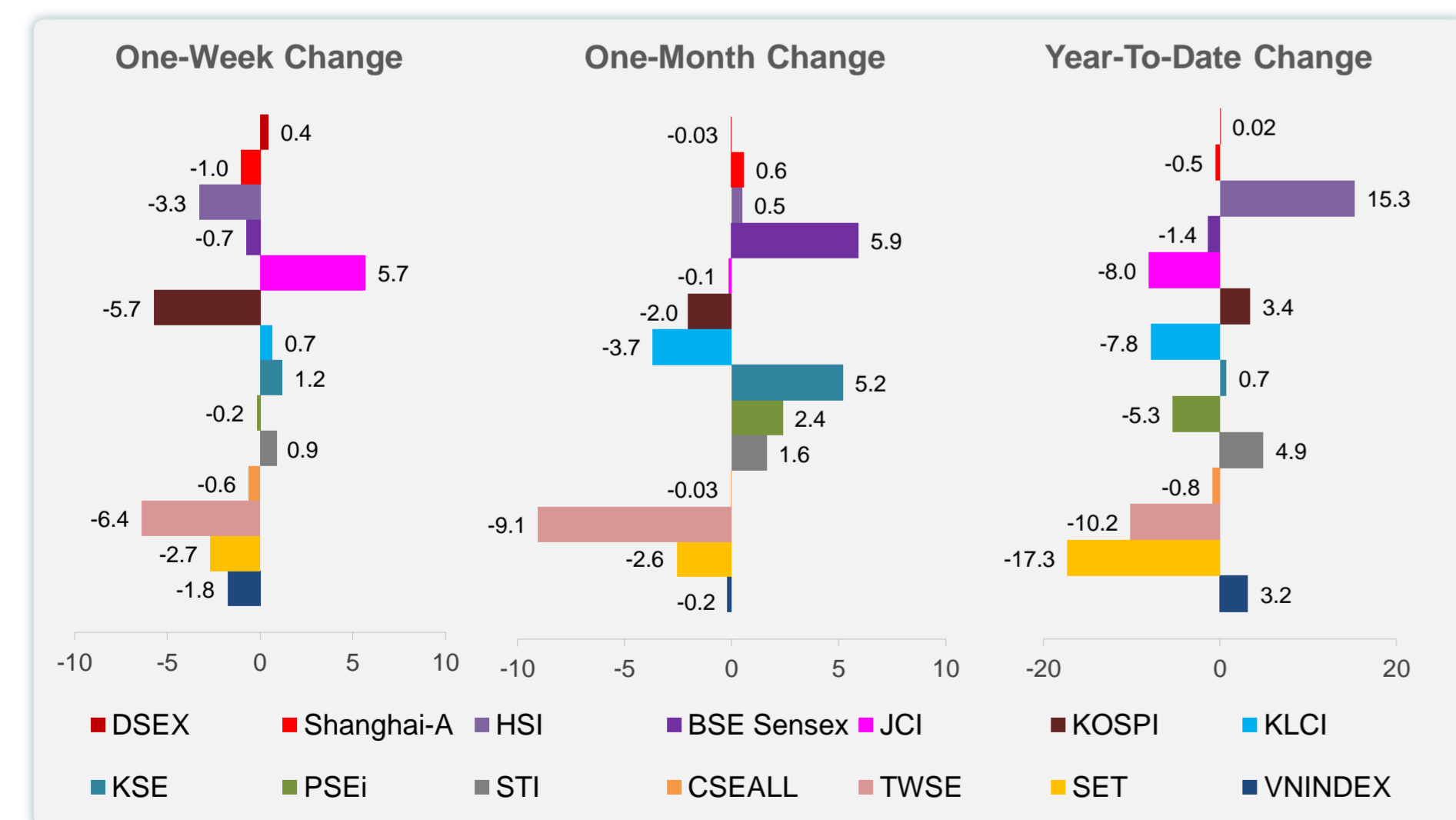
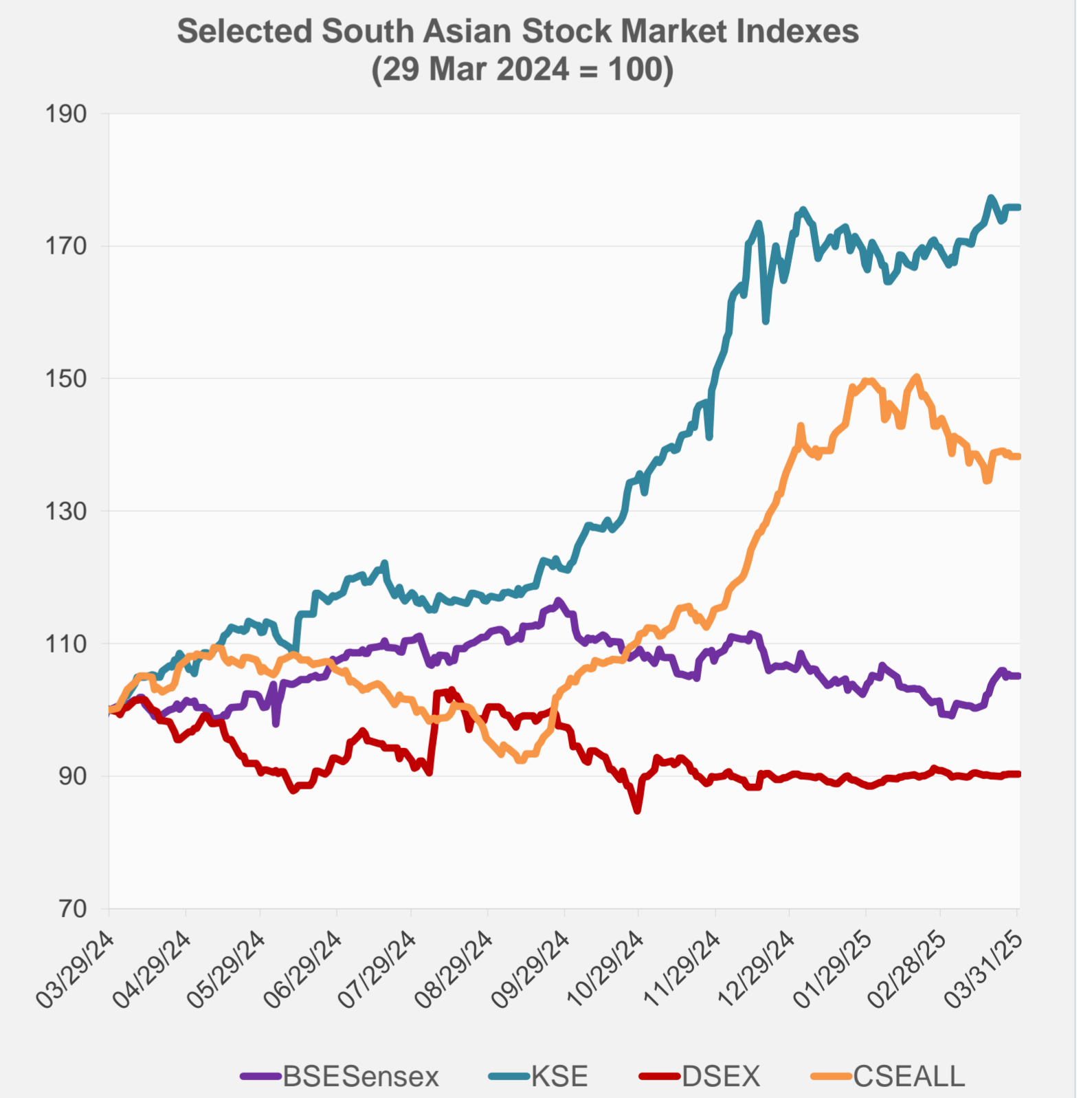
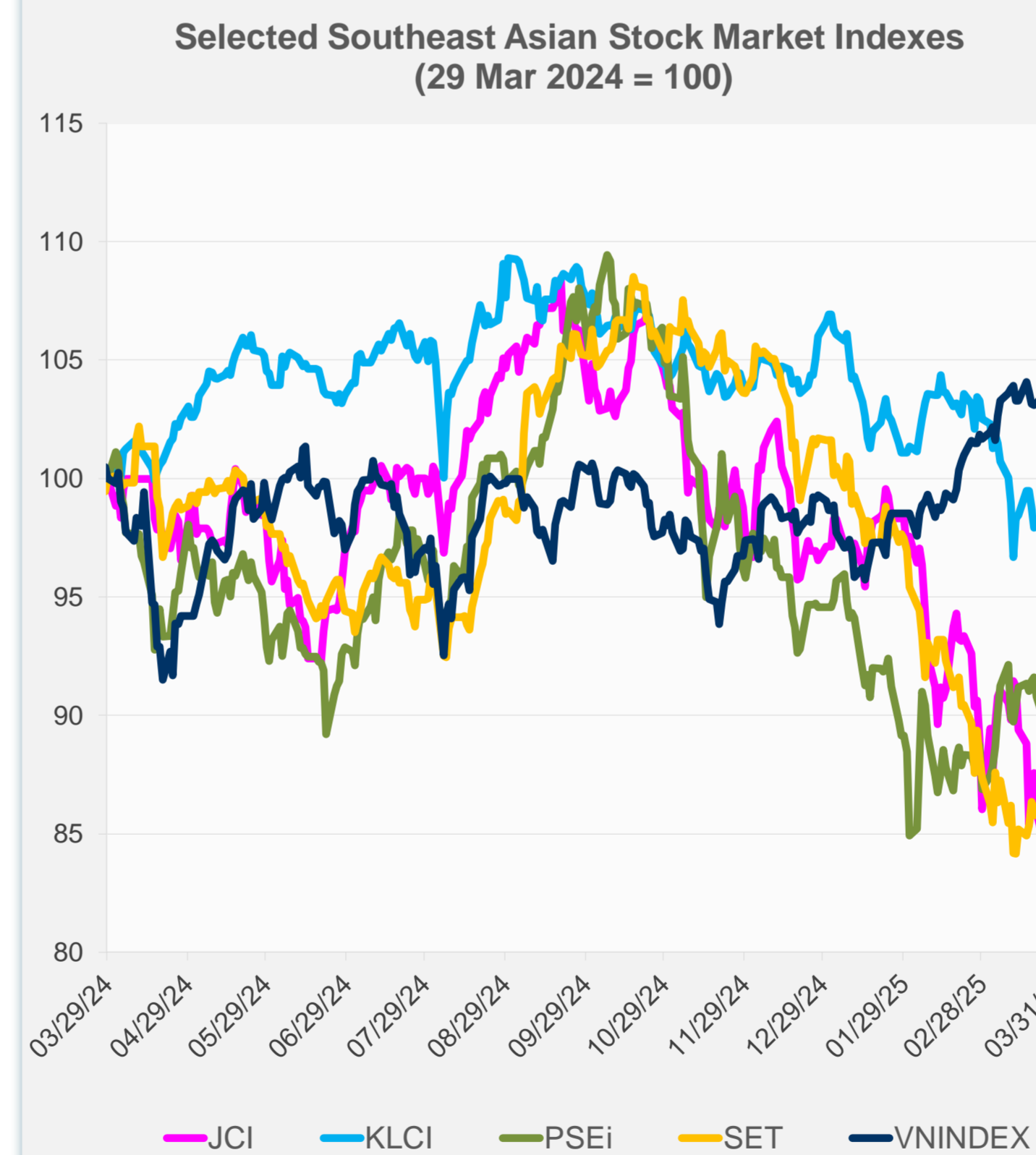
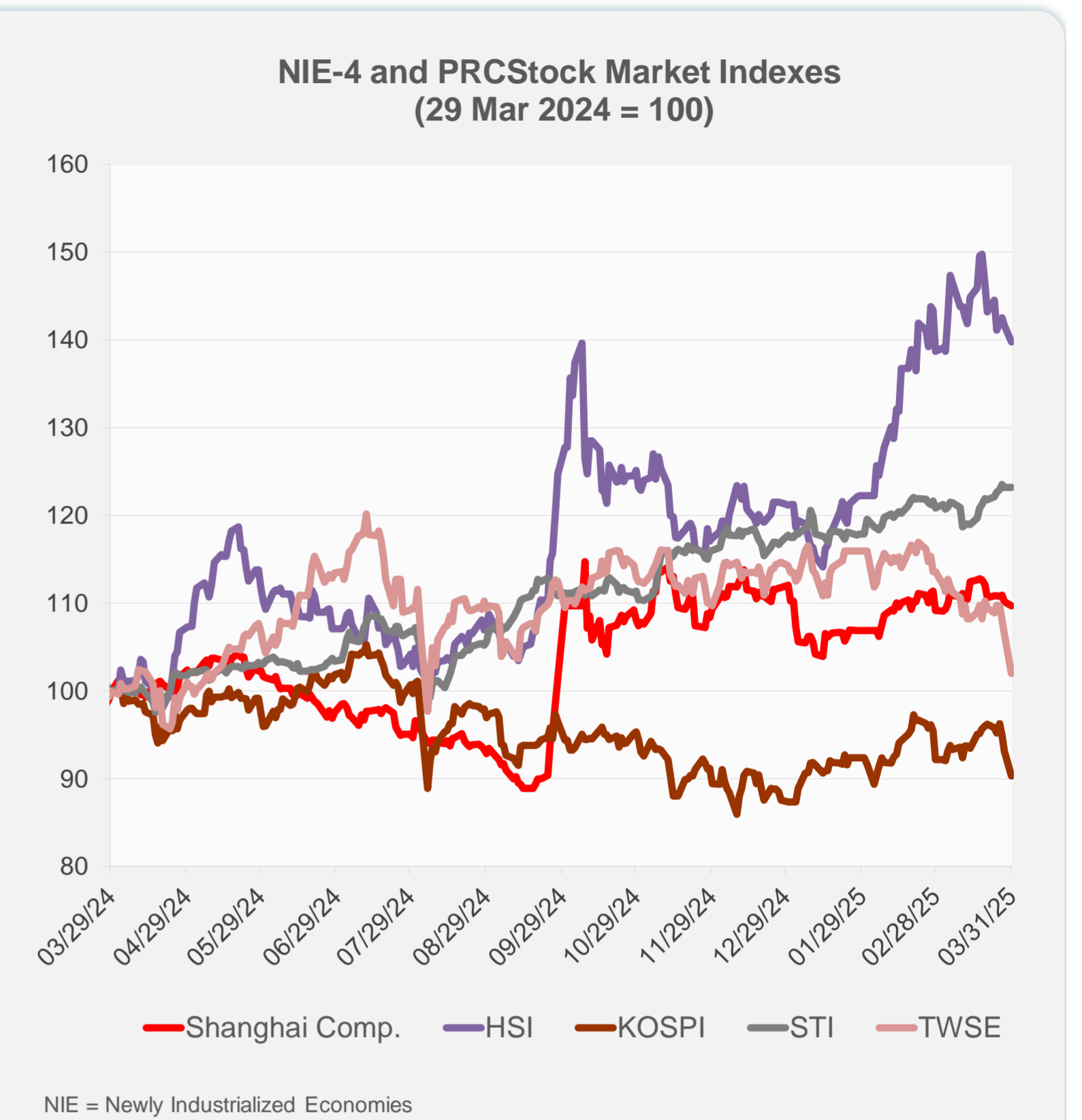
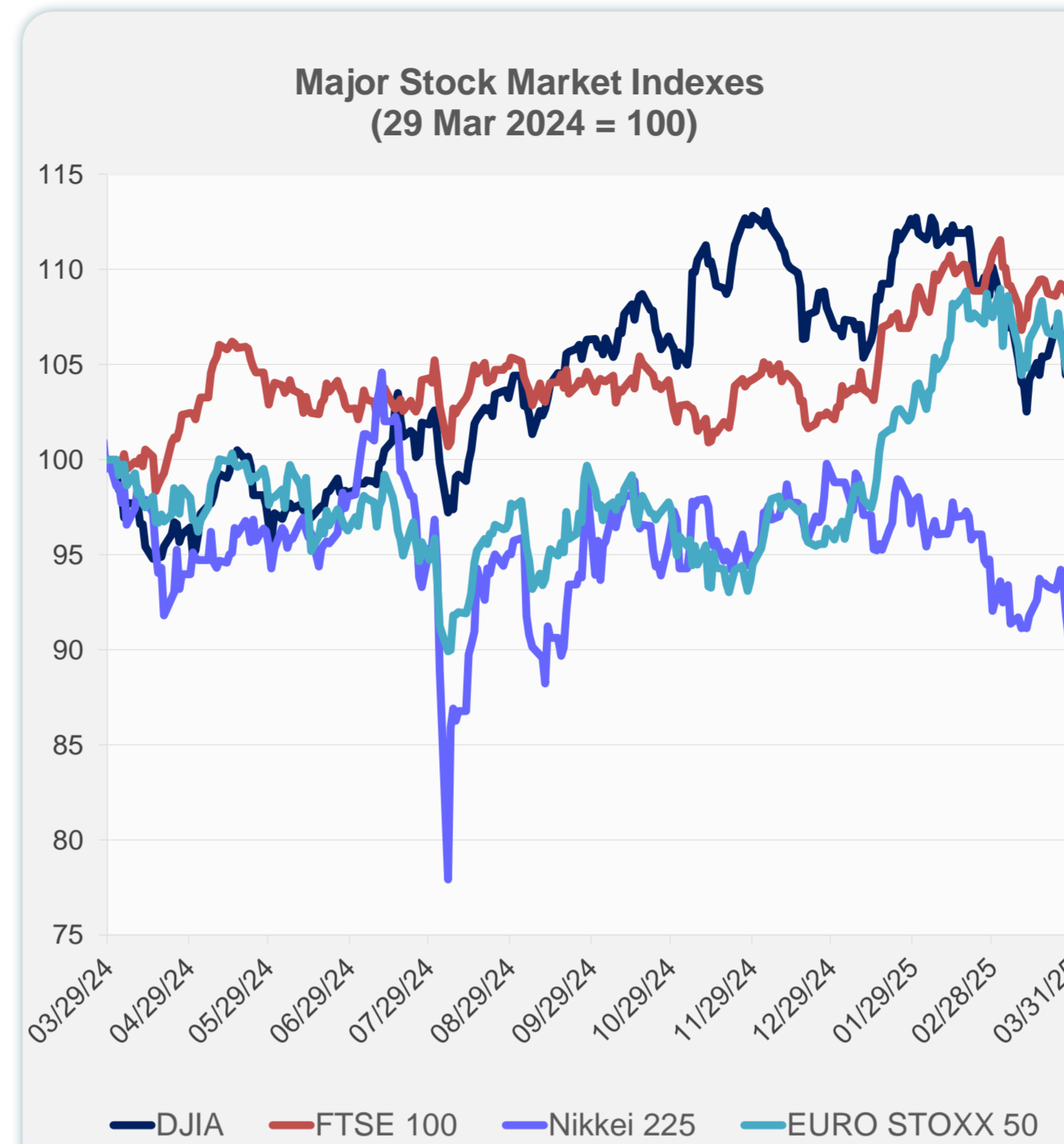


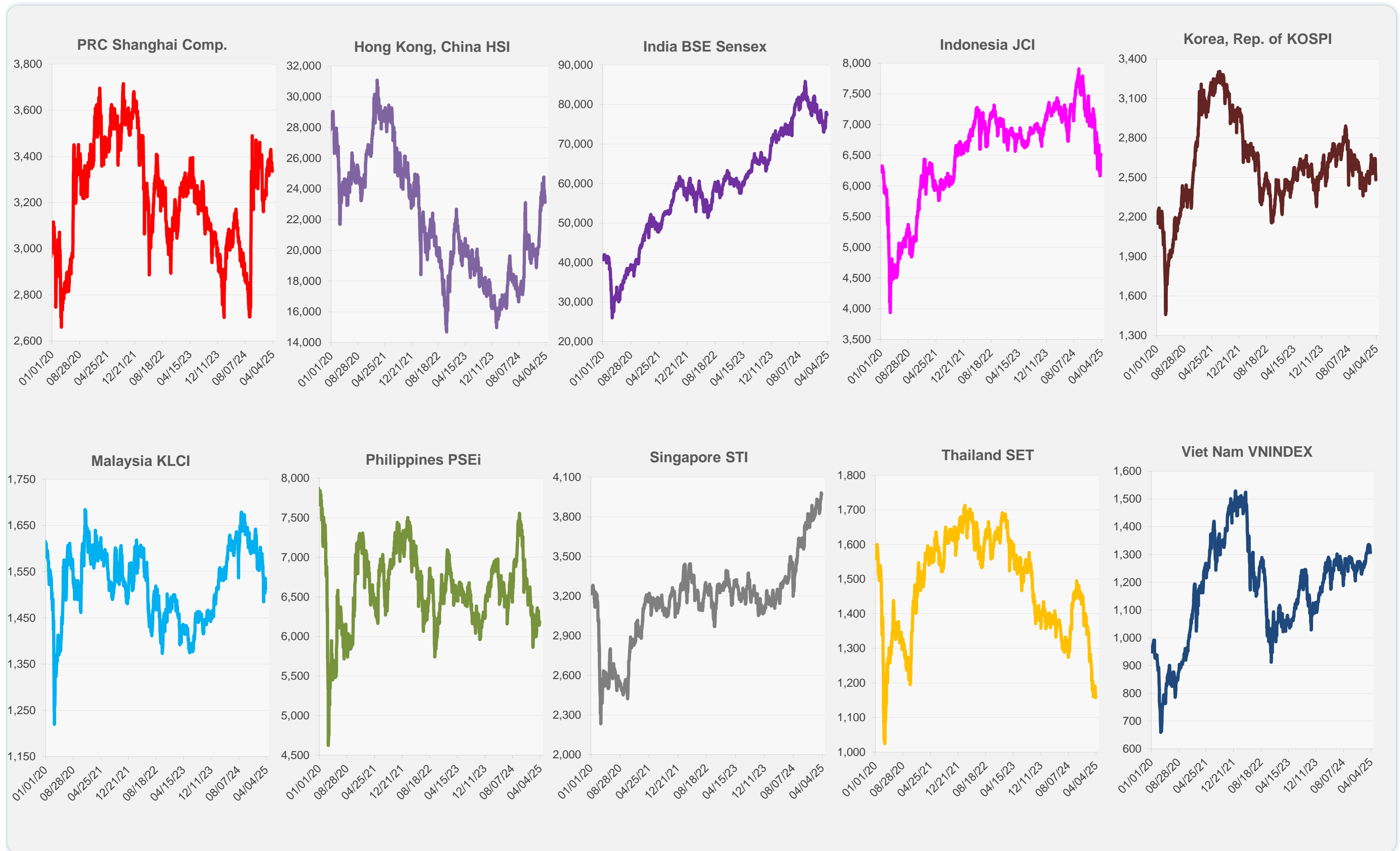
Daily Market Watch
STOCK INDEXES

1 April 2025, 9:00 AM Manila

	Latest Closing	% change from Previous Day	% change from 01-Jan-25
US Dow Jones Ind Avg	42,001.76	1.00	-1.28
US NASDAQ	17,299.29	-0.14	-10.42
US S&P 500	5,611.85	0.55	-4.59
UK FTSE 100	8,582.81	-0.88	5.01
EURO STOXX 50	5,248.39	-1.56	7.20
Japan NIKKEI 225	35,617.56	-4.05	-10.72
Bangladesh DSEX	5,219.16	0.00	0.02
PRC Shanghai Comp.	3,335.75	-0.46	-0.48
Hong Kong, China HSI	23,119.58	-1.31	15.25
India BSE Sensex	77,414.92	0.00	-1.39
Indonesia JCI	6,510.62	0.00	-8.04
Korea, Rep. of KOSPI	2,481.12	-3.00	3.40
Malaysia KLCI	1,513.65	0.00	-7.84
Pakistan KSE 100	117,806.74	0.00	0.68
Philippines PSEi	6,180.72	0.54	-5.33
Singapore STI	3,972.43	0.00	4.88
Sri Lanka CSEALL	15,814.82	0.00	-0.81
Taipei, China TWSE	20,695.90	-4.20	-10.15
Thailand SET	1,158.09	-1.48	-17.29
Viet Nam VNINDEX	1,306.86	-0.80	3.16

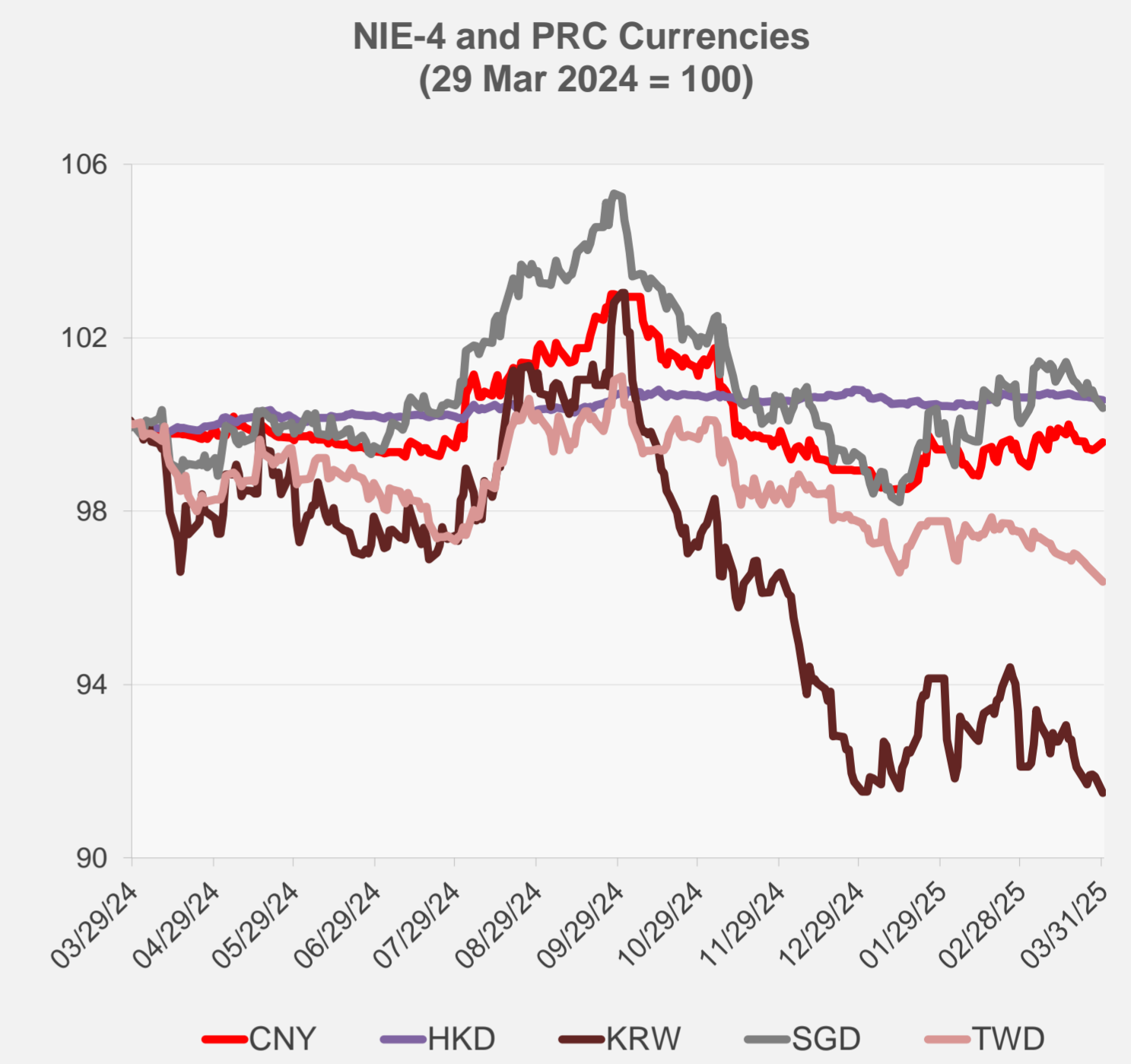


Sources: ADB calculations using data from CEIC Data Company and Haver Analytics.

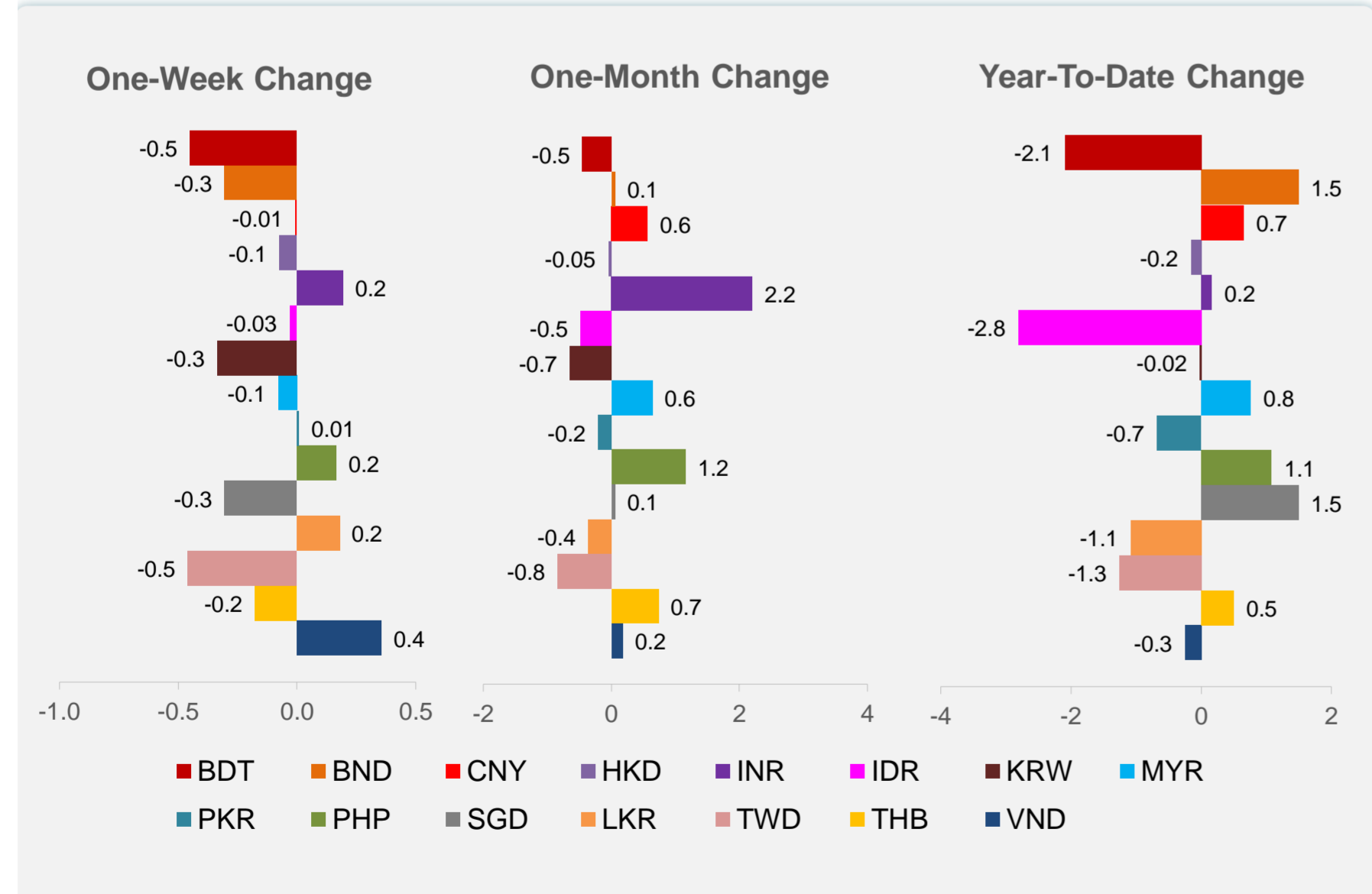
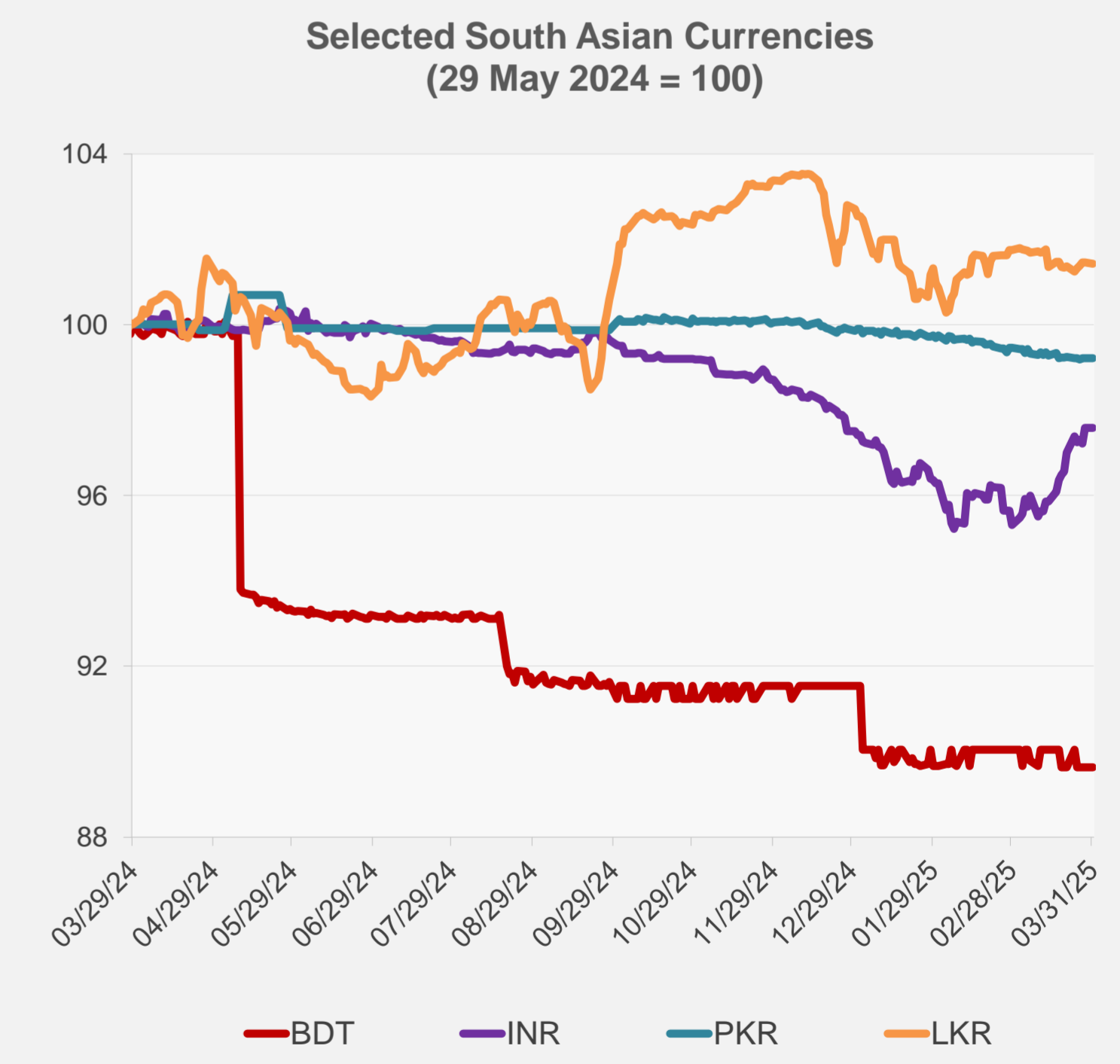
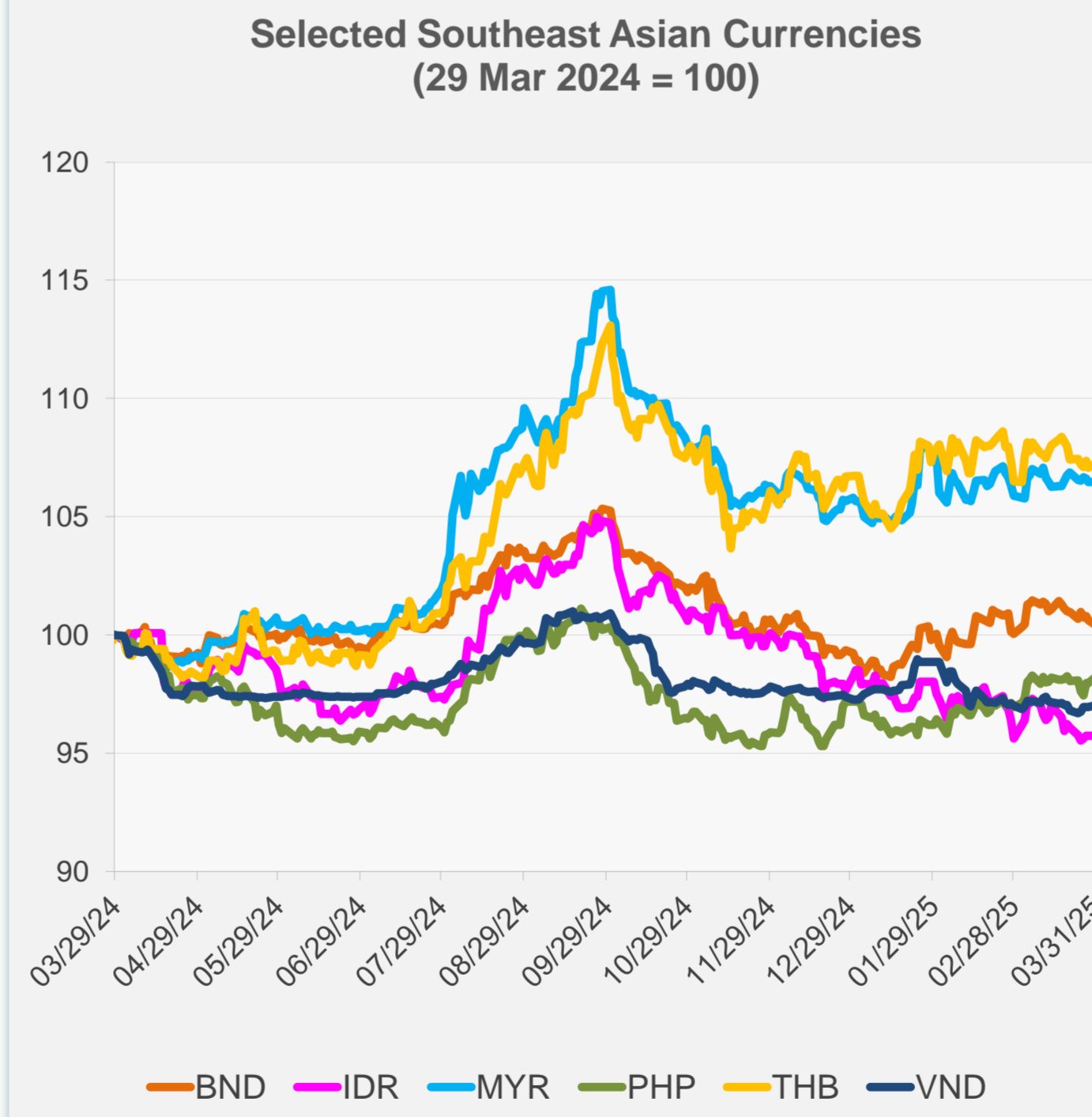


Sources: CEIC Data Company and Haver Analytics.

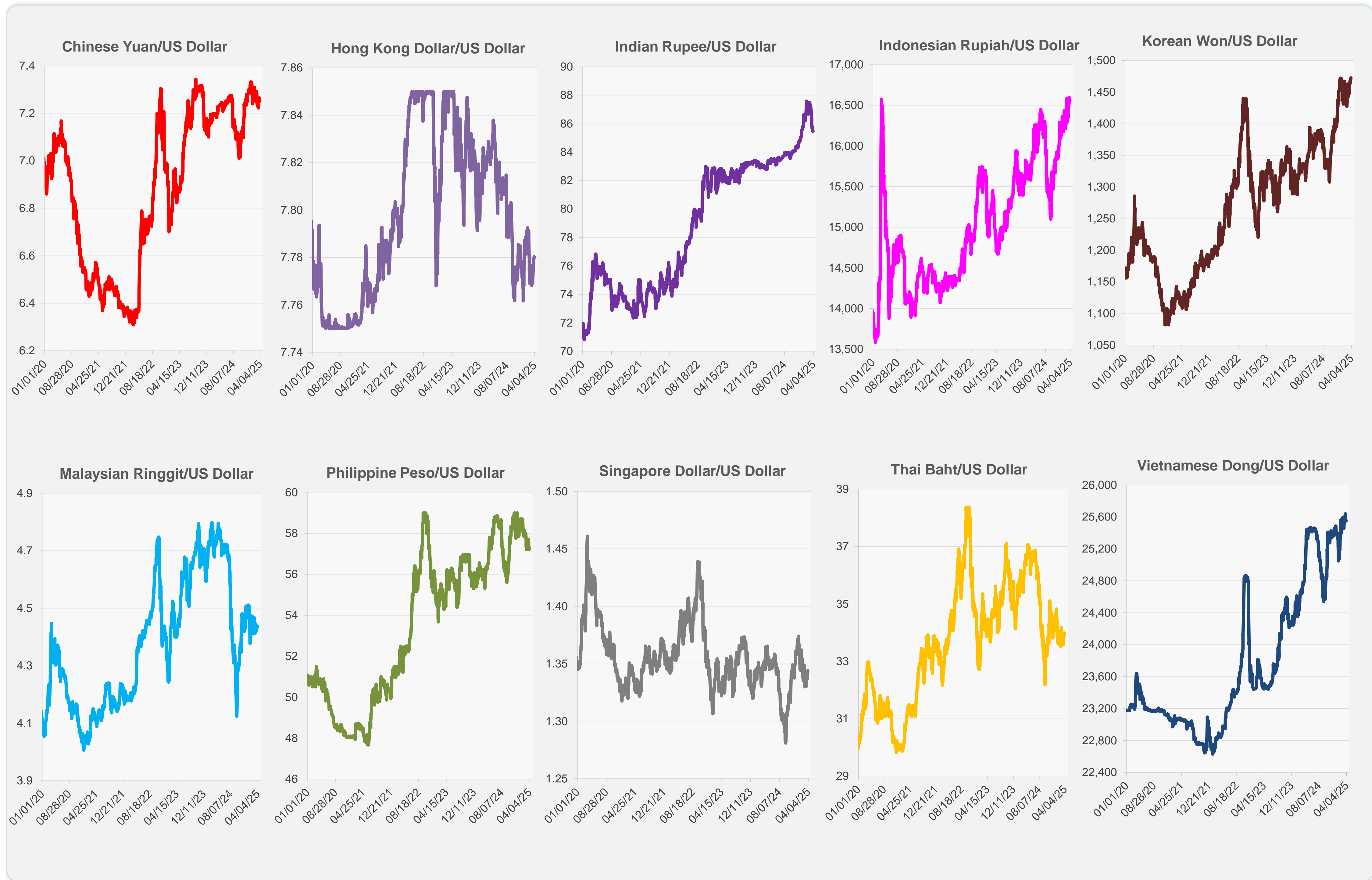
	Latest Closing	% change from Previous Day	% change from 01-Jan-25
Euro	0.93	-0.18	4.32
Japanese yen (JPY)	149.54	0.49	5.10
Bangladeshi taka (BDT)	122.05	0.00	-2.09
Brunei dollar (BND)	1.34	-0.24	1.50
Chinese yuan (CNY)	7.25	0.16	0.66
Hong Kong dollar (HKD)	7.78	-0.02	-0.16
Indian rupee (INR)	85.47	0.00	0.17
Indonesian rupiah (IDR)	16,560.00	0.00	-2.81
Korean won (KRW)	1,472.50	-0.40	-0.02
Malaysian ringgit (MYR)	4.44	0.00	0.77
Pakistan rupee (PKR)	280.28	0.00	-0.68
Philippine peso (PHP)	57.23	0.28	1.08
Singapore dollar (SGD)	1.34	-0.24	1.50
Sri Lanka rupee (LKR)	296.20	-0.04	-1.08
Taipei,China NT dollar (TWD)	33.20	-0.19	-1.26
Thai baht (THB)	33.93	0.18	0.50
Vietnamese dong (VND)	25,549.00	0.09	-0.25



NIE = Newly Industrialized Economies



Note: Negative/Decreasing values indicate depreciation of local currency, and positive/increasing values indicate appreciation.
Source: ADB calculations using data from Haver Analytics.



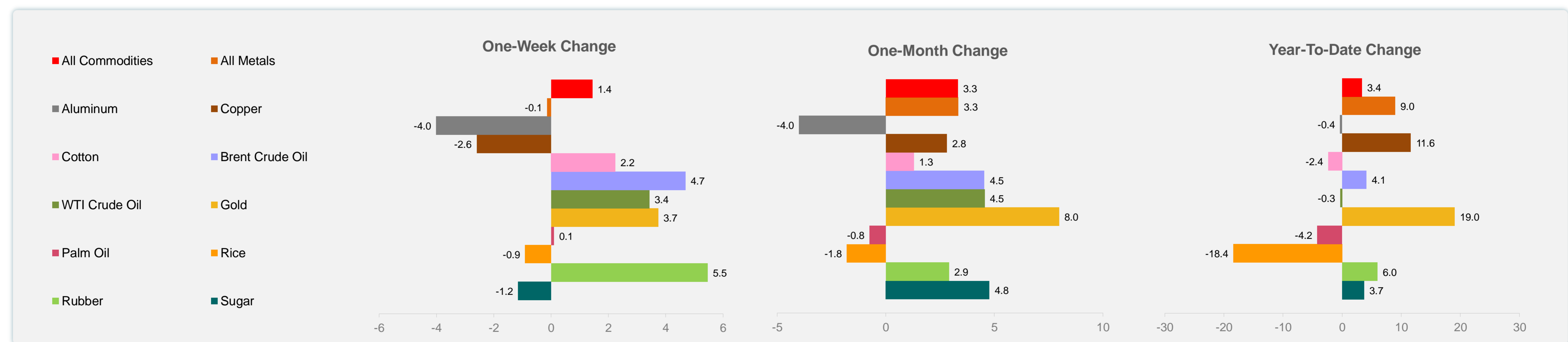
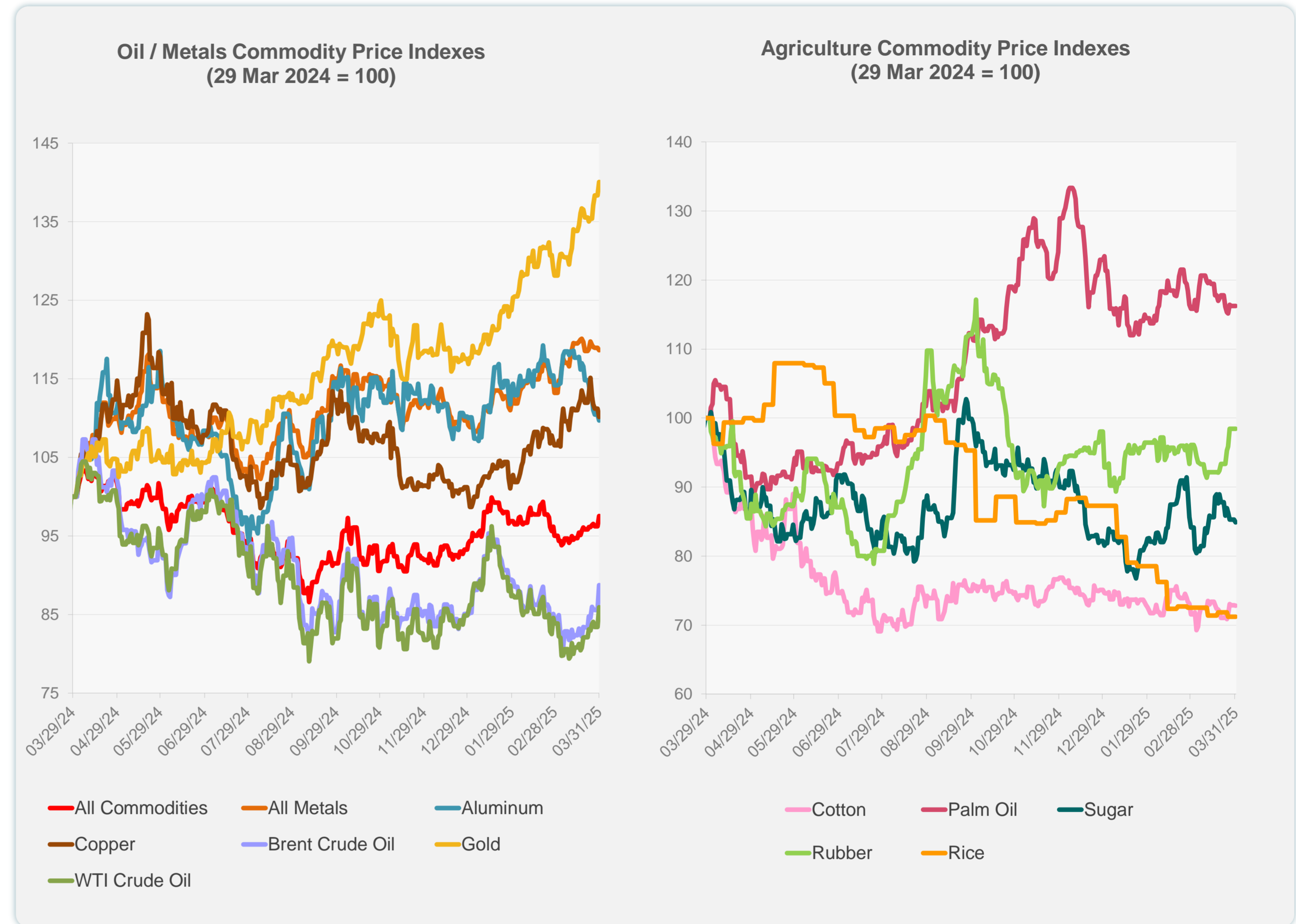
Source: Haver Analytics.

Daily Market Watch
COMMODITY PRICES

	Unit	Latest Closing	% change from Previous Day	% change from 01-Jan-25
S&P All Commodities	US\$	568.08	1.35	3.35
S&P All Metals	US\$	334.99	-0.27	8.98
Aluminum	US\$/metric ton	2,517.73	-0.71	-0.36
Copper	US\$/metric ton	9,658.68	-0.93	11.63
Cotton	US cents/lb	64.33	-0.11	-2.38
Brent Crude Oil	US\$/barrel	77.17	3.67	4.13
WTI Crude Oil	US\$/barrel	71.48	3.06	-0.33
Gold	US\$/troy oz	3,123.57	1.25	19.02
Palm Oil	US\$/metric tonne	1,053.78	0.00	-4.21
Rice ¹	US\$/metric ton	438.00	0.00	-18.44
Rubber ²	US\$/kg	251.00	0.00	6.00
Sugar	US cents/lb	18.88	-0.47	3.74

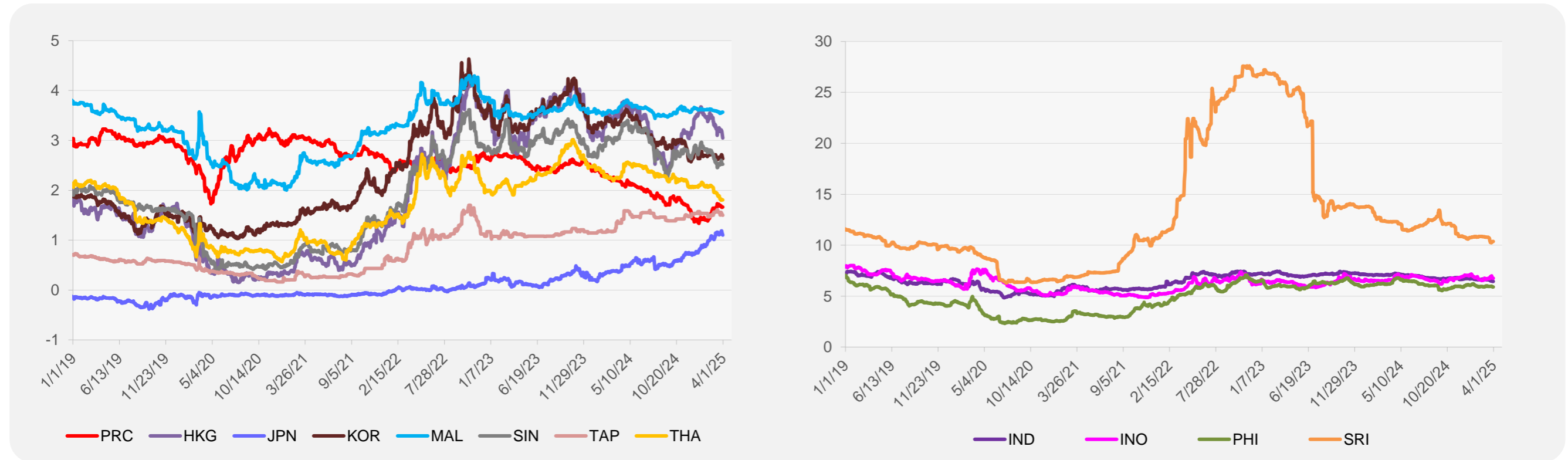
¹ Latest closing price from 26 March 2025.

² Singapore Exchange, Ribbed Smoked Sheet Rubber.

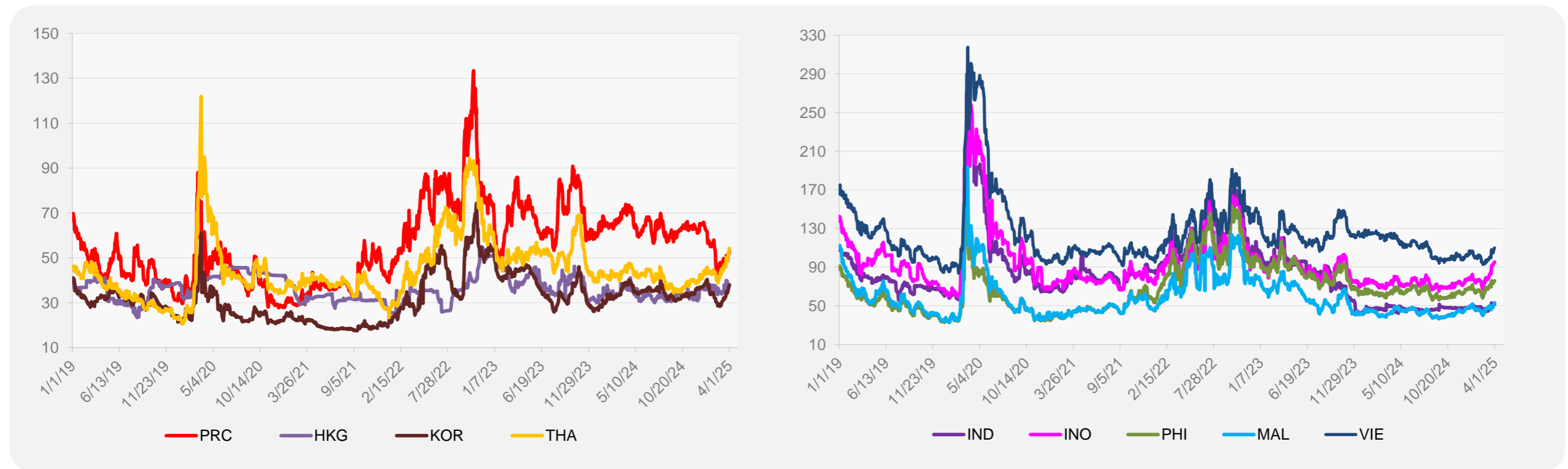


Source: ADB calculations using data from Bloomberg.

5-YEAR LOCAL CURRENCY GOVERNMENT BOND YIELDS (%)



5-YEAR CREDIT DEFAULT SWAP¹



¹ In USD and based on sovereign bonds.
Source: ADB calculations using data from Bloomberg.